

# F90AXP

english

italiano

français

deutsch

español

nederlands

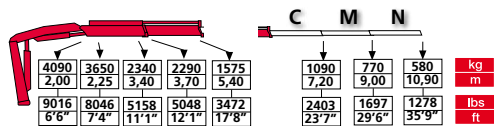


c r a n e s   w i t h o u t   c o m p r o m i s e

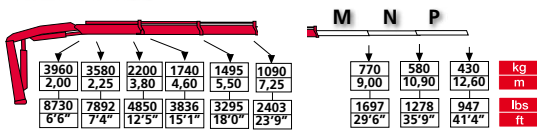
**FASSI**

CRANES WITHOUT COMPROMISE

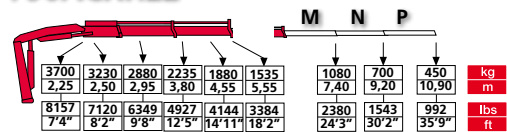
## F90AXP.21



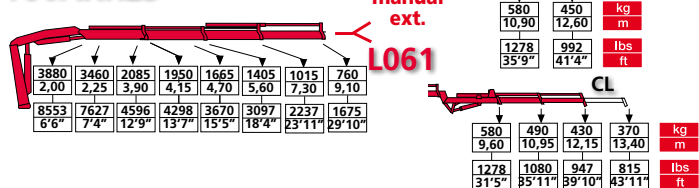
## F90AXP.22



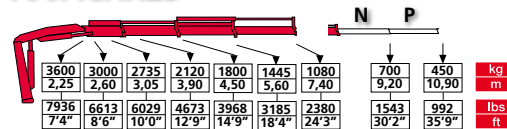
## F90ACXP.22



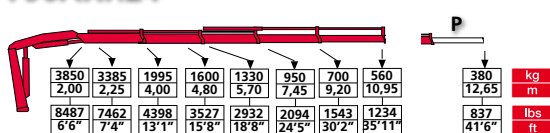
## F90AXP.23



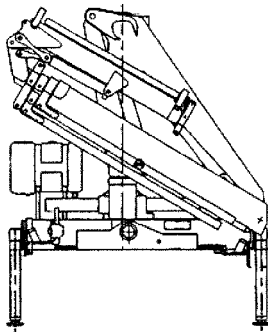
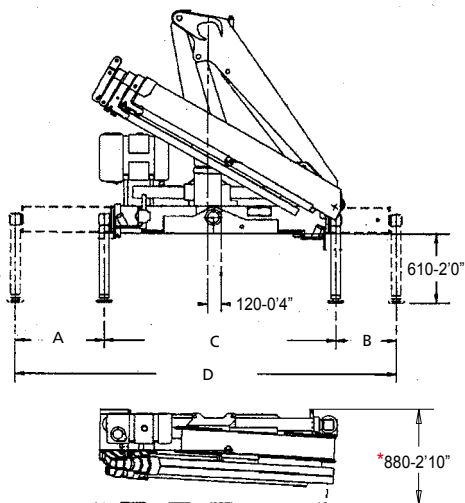
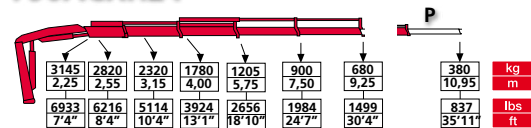
## F90ACXP.23



## F90AXP.24



## F90ACXP.24



**L061** 125 Kg 275 lbs  
**CL** 13 Kg 28 lbs

	STD	Extra	Super Extra	Iper Extra	STD	Extra	Super Extra	Iper Extra
<b>A</b>	785	1190	1370	1790	2035	2115	2230	2230
	2'6"	3'10"	4'5"	5'10"	6'8"	6'11"	7'3"	7'3"
<b>B</b>	545	1190	1370	1580	3365	4500	4970	5600
	1'9"	3'10"	4'5"	5'2"	11'0"	14'9"	16'3"	18'4"

\* With supplementary hoses  
 Con tubazioni supplementari  
 Avec tuyauterie supplementaire  
 Con tuberias suplementarias  
 Mit zusaetzlichen leitungen  
 Met extra functies

- GB** 1) FX500 electronic control system  
 2) RCH/RCS remote control  
 3) MPES system  
 4) XP system
- IT** 1) Sistema di controllo elettronico FX500  
 2) Radiocomando RCH/RCS  
 3) Sistema MPES  
 4) Sistema XP
- FR** 1) Système électronique de contrôle FX500  
 2) Radiocommande RCH/RCS Evolution  
 3) MPES système  
 4) XP système
- ES** 1) Sistema electrónico de control FX500  
 2) Radiomando RCH/RCS  
 3) Sistema MPES  
 4) Sistema XP
- DE** 1) FX500-System, die elektronische Lastmomentbegr.  
 2) RCH/RCS-Funkfern-steuerung  
 3) Multi-Power Ausschubsystem  
 4) System XP
- NL** 1) FX500 elektronisch beveiligingssysteem  
 2) RCH/RCS Evolutie radiografische afstandsbediening  
 3) MPES-systeem  
 4) XP-systeem

	tm	lbs.ft	m	ft	m	ft	°	kNm	lbs.ft	Mpa	psi	l/min	gal/min	l	gal	kg	lbs	mm	ft	mm	ft	mm	ft
F90AXP.21	8,5	61480	5,60	18'4"	1,70	5'6"	370	11,7	8632	32,0	4640	20	5	60	16	960	2118	2200	7'3"	700	2'4"	1970	6'6"
F90AXP.22	8,4	60757	7,40	24'4"	3,45	11'3"	370	11,7	8632	32,0	4640	20	5	60	16	1025	2260	2200	7'3"	720	2'4"	1970	6'6"
F90AXP.23	8,1	58587	9,25	30'4"	5,20	17'0"	370	11,7	8632	32,0	4640	20	5	60	16	1110	2447	2200	7'3"	720	2'4"	1970	6'6"
F90AXP.24	8,0	57864	11,10	36'5"	6,95	22'9"	370	11,7	8632	32,0	4640	20	5	60	16	1170	2579	2200	7'3"	720	2'4"	1970	6'6"
F90ACXP.22	8,6	62204	5,70	18'9"	2,60	8'6"	370	11,7	8632	29,0	4210	20	5	60	16	990	2182	2200	7'3"	720	2'4"	1970	6'6"
F90ACXP.23	8,3	60034	7,55	24'9"	4,35	14'3"	370	11,7	8632	29,0	4210	20	5	60	16	1075	2370	2200	7'3"	720	2'4"	1970	6'6"
F90ACXP.24	7,3	52801	9,40	30'10"	6,10	20'0"	370	11,7	8632	29,0	4210	20	5	60	16	1140	2513	2225	7'4"	720	2'4"	1970	6'6"
F90AXP.23/L061	8,1	58587	12,30	40'4"	6,40	20'11"	370	11,7	8632	32,0	4640	20	5	60	16	1245	2747	2200	7'3"	885	2'11"	1970	6'6"

Data and descriptions are approximate and not binding - Dati e dimensioni sono forniti a titolo indicativo e non impegnativo - Toutes les données et descriptions sont fournies à titre indicatif, sans engagement Unverbindliche Angaben, Konstruktionsänderungen vorbehalten - Datos y descripciones todos a título indicativo y no imperativo - Specificaties zijn niet bindend, wijzigingen derhalve voorbehouden



FASSI GRU S.p.A. - Via Roma, 110 - 24021 Albino (Bergamo) ITALY  
 Tel: +39 035 776400 - Fax +39 035 755020  
 http://www.fassigroup.com E-mail: fassi@fassigroup.com

