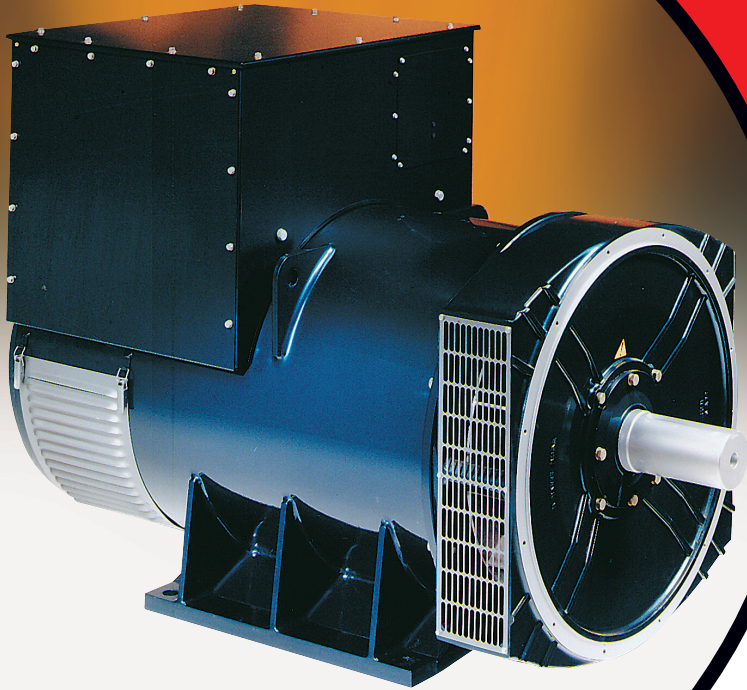


product profile

HC6 RANGE

Voltages
120V - 690V

Outputs
from 800 - 1438 kVA (4 pole)



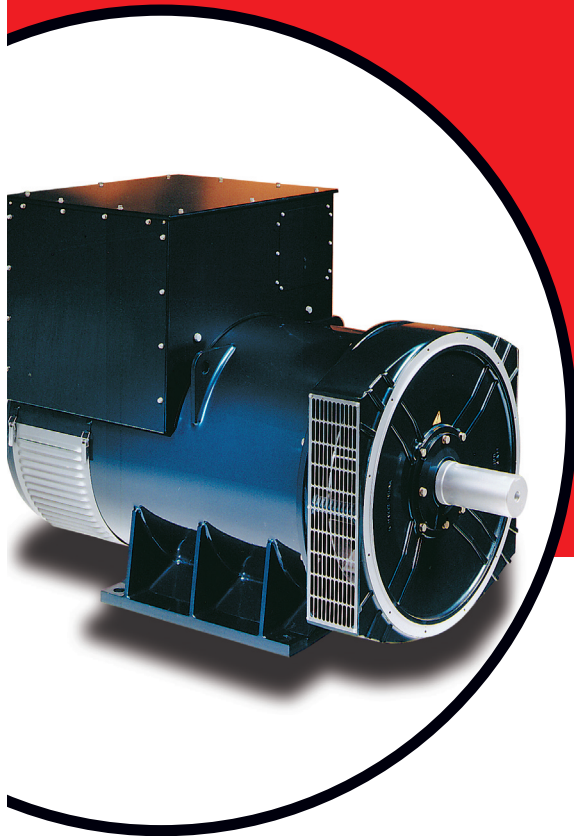
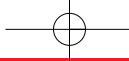
FEATURES:

- Permanent Magnet Generator (PMG) provides an isolated power supply to the excitation control system
- MX321 (PMG) as standard with 0.5% Regulation and 3 phase sensing
- 2/3 pitch winding as standard, to avoid excessive neutral currents
- Single or two bearing construction with dynamically balanced rotor and sealed-for-life bearings
- Easy access for installation and maintenance
- Built to conform with all leading industrial and marine standards
- IP23 as standard

OPTIONS & ACCESSORIES:

- Temperature Indication RTD's
- Winding Protection Thermistors
- Air Condensation Heaters
- Air Filters
- Quadrature Droop kit for Parallel Operation
- Power factor Controller
- Diode Failure Unit
- Excitation Loss Module
- Manual Voltage Regulator

STAMFORD
power generation



product profile

HC 6 RANGE

TYPICAL APPLICATIONS:

- Combined Heat & Power
- Parallel Operation
- Peak Shaving
- Base Load Prime
- Standby
- Rental
- Telecommunication
- Marine/Offshore

Standard Winding (311)

3 Phase Ratings for STAMFORD HC6 Generators

Rating/Ambient	4 Pole																	
	50Hz (1500 rpm)									60Hz (1800 rpm)								
	Base 40°C			Peak 40°C			Peak 27°C			Base 40°C			Peak 40°C			Peak 27°C		
Application/Temp Rise	Continuous 125°C			Standby 150°C			Standby 163°C			Continuous 125°C			Standby 150°C			Standby 163°C		
Voltage	380	400	415	380	400	415	380	400	415	416	440	480	416	440	480	416	440	480
HCI 6G kVA	800	810	800	820	830	820	850	860	850	875	925	1000	913	969	1046	950	1000	1088
kW	640	648	640	656	664	656	680	688	680	700	740	800	730	775	837	760	800	870
HCI 6H kVA	910	940	910	960	980	960	1000	1010	1000	1025	1063	1125	1088	1125	1188	1125	1163	1219
kW	728	752	728	768	784	768	800	808	800	820	850	900	870	900	950	900	930	975
HCI 6J kVA	1000	1030	1000	1060	1070	1060	1100	1100	1100	1150	1200	1300	1206	1250	1350	1250	1300	1400
kW	800	824	800	848	856	848	880	888	880	920	960	1040	965	1000	1080	1000	1040	1120
HCI 6K kVA	1110	1130	1110	1180	1190	1180	1220	1230	1220	1275	1338	1438	1350	1413	1525	1400	1463	1575
kW	888	904	888	944	952	944	976	984	976	1020	1070	1150	1080	1130	1220	1120	1170	1260

3 Phase Ratings for STAMFORD HC6 Generators

Rating/Ambient	6 Pole																	
	50Hz (1000 rpm)									60Hz (1200 rpm)								
	Base 40°C			Peak 40°C			Peak 27°C			Base 40°C			Peak 40°C			Peak 27°C		
Application/Temp Rise	Continuous 125°C			Standby 150°C			Standby 163°C			Continuous 125°C			Standby 150°C			Standby 163°C		
Voltage	380	400	415	380	400	415	380	400	415	416	440	480	416	440	480	416	440	480
HCI 6G kVA	280	280	280	291	291	291	300	300	300	331	350	350	344	364	364	354	375	375
kW	224	224	224	233	233	233	240	240	240	265	280	280	275	291	291	283	300	300
HCI 6H kVA	380	380	380	395	395	395	407	407	407	450	475	475	468	494	494	482	508	508
kW	304	304	304	316	316	316	326	326	326	360	380	380	374	395	395	386	406	406
HCI 6J kVA	450	450	450	468	468	468	482	482	482	531	563	563	552	586	586	586	602	602
kW	360	360	360	374	374	374	386	386	386	425	450	450	442	469	469	454	482	482
HCI 6K kVA	570	570	570	593	593	593	610	610	610	675	713	713	702	742	742	722	763	763
kW	456	456	456	474	474	474	488	488	488	540	570	570	562	594	594	578	610	610

Due to our policy of continuous improvement, details in this leaflet which were correct at time of printing may now be due for amendment. Information included must therefore not be regarded as binding.

PM_HC6 PP GB_11.02_02_GB

©Newage International 2002

